



STC08-AB030 Plate

- Red indicator
- Key-operated switch

OPERATION:

STC flush plates are designed to manage and control the door access to laboratories and clean rooms with controlled environments.

Simple and clear signs are used to display the status of the information.

TECHNICAL SPECIFICATIONS:

- Stainless steel cover and front panel
- Airtight
- Resistant to decontamination products (formaldehyde, H₂O₂, etc.)
- Ensures uniform lighting
- LED Advantages: life span > (100,000 hours)
- Key-operated switch performance > 200,000 operations
- Low voltage power supply: 24V DC
- Fast-pinning system with polarising key
- Fast and easy installation
- Low power consumption

SECTORS OF APPLICATION:

Clean rooms
 Grey rooms
 Laboratories
 Hospitals
 Banks...

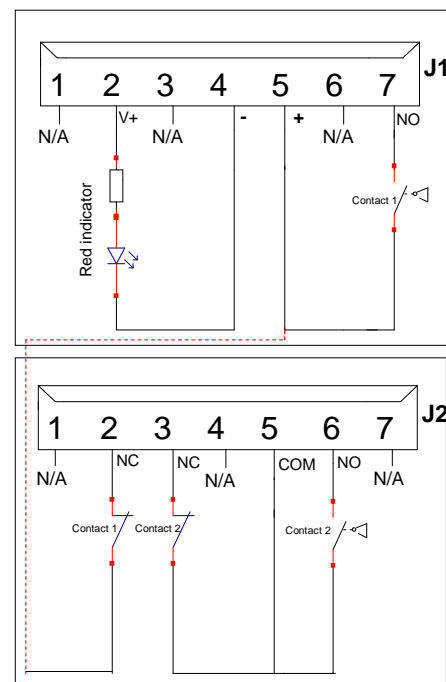


WIRING DIAGRAM:

Mark (J1)	Colour	Description
1	Yellow	NC
2	Red	Red LED (V+)
3	Green	NC
4	Blue	Power Supply (0V)
5	Brown	Power Supply (+24)
6	White	NC
7	Grey	Key-operated switch

Mark (J2)	Colour	Description
1	N/A	N/A
2	Pink	Key-operated switch (NC)
3	White	Key-operated switch (NC)
4	N/A	N/A
5	Blue	Key-operated switch (COM)
6	Grey	Key-operated switch (NO)
7	N/A	N/A

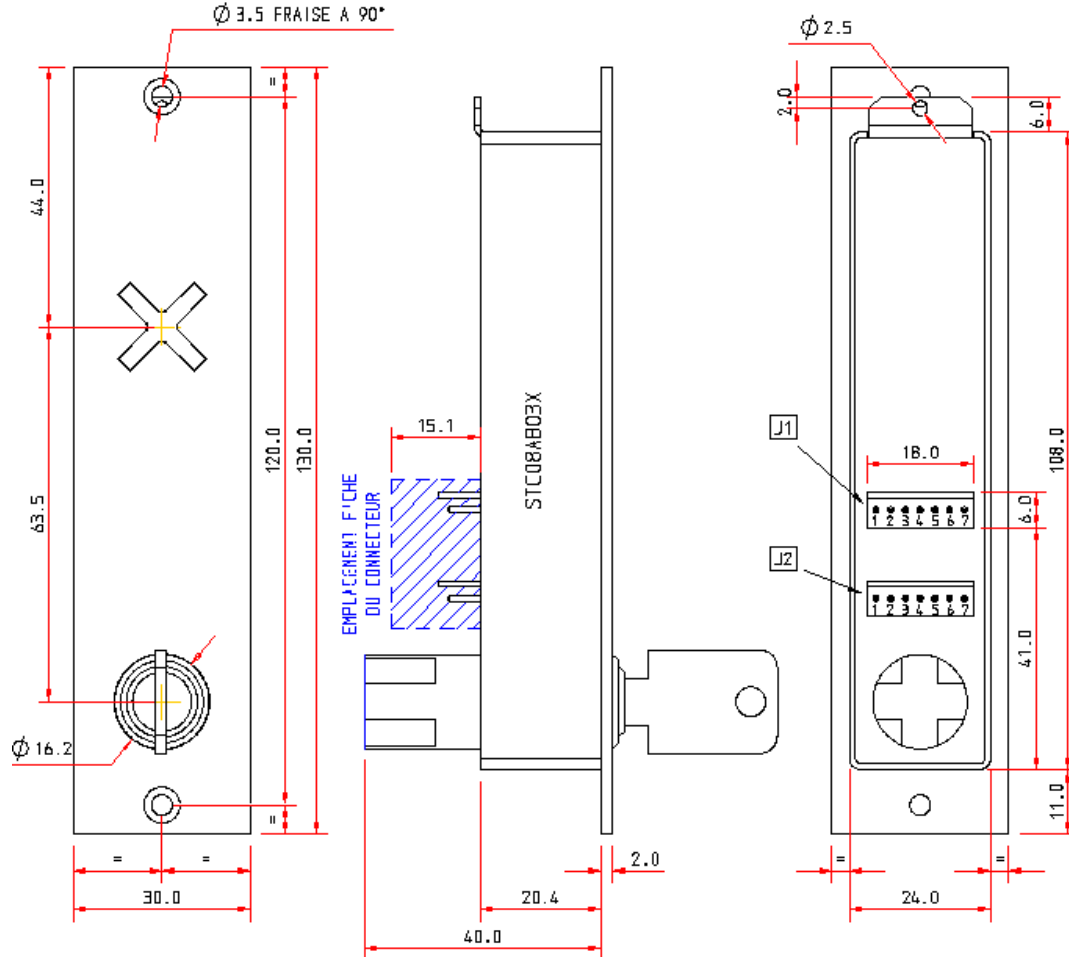
ELECTRICAL DIAGRAM:



ELECTRICAL MODALITY:

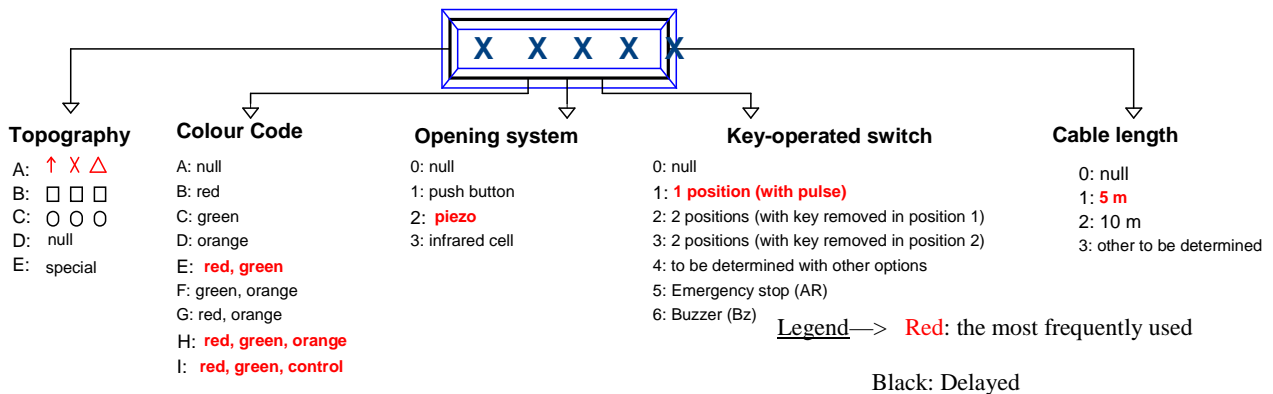
Parameter	Voltage (volt)-{-}-	Current (milliamperes)
Red LED	24V	30mA
Key-operated switch	24V	

MECHANICAL FORMATS:



INFORMATION FOR ALL FUNCTIONS:

STC 08 PLATE



Certificat 2008
n°31046

290 Rue Louise Labé – BP.58– F-69970 CHAPONNAY

Phone: +33 (0)4.78.21.14.14 – Fax: +33 (0)4.78.21.62.80 – E-mail: salles_blanches@stc.fr

E-mail: export@stc.fr

E-mail: electronique@stc.fr

Simplified Joint Stock Company (S.A.S.) with a social capital of 37,000 EUR – APE 281 A – RCS LYON

B 320 341 449 – TVA FR 60 320 341 449