



STC08 - AG210 Plate

- Orange indicator
- Red indicator
- Stainless steel Piezo
- Key-operated switch

OPERATION:

STC flush plates are designed to manage and control the door access to laboratories and clean rooms with controlled environments.

Simple and clear signs are used to display the status of the information.

TECHNICAL SPECIFICATIONS:

- Stainless steel cover and front panel
- Airtight
- Resistant to decontamination products (formaldehyde, H₂O₂, etc.)
- Ensures uniform lighting
- LED Advantages: life span > 100,000 hours
- Pb Performance of the Piezo > 20 million cycles
- Key-operated switch performance > 200,000 operations
- Low voltage power supply: 24V DC
- Fast-pinning system with polarising key
- Fast and easy installation
- Low power consumption

SECTORS OF APPLICATION:

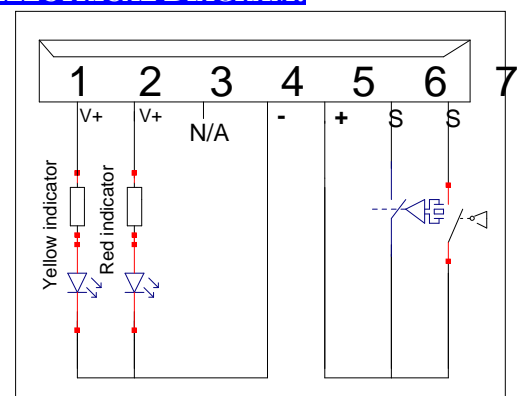
Clean rooms
 Grey rooms
 Laboratories
 Hospitals
 Banks, etc.



WIRING DIAGRAM:

Mark	Colour	Description
1	Yellow	Orange LED (V+)
2	Red	Red LED (V+)
3	Green	N/A
4	Blue	Power Supply (0V)
5	Brown	Power Supply (+24V)
6	White	Piezo
7	Grey	Key-operated switch

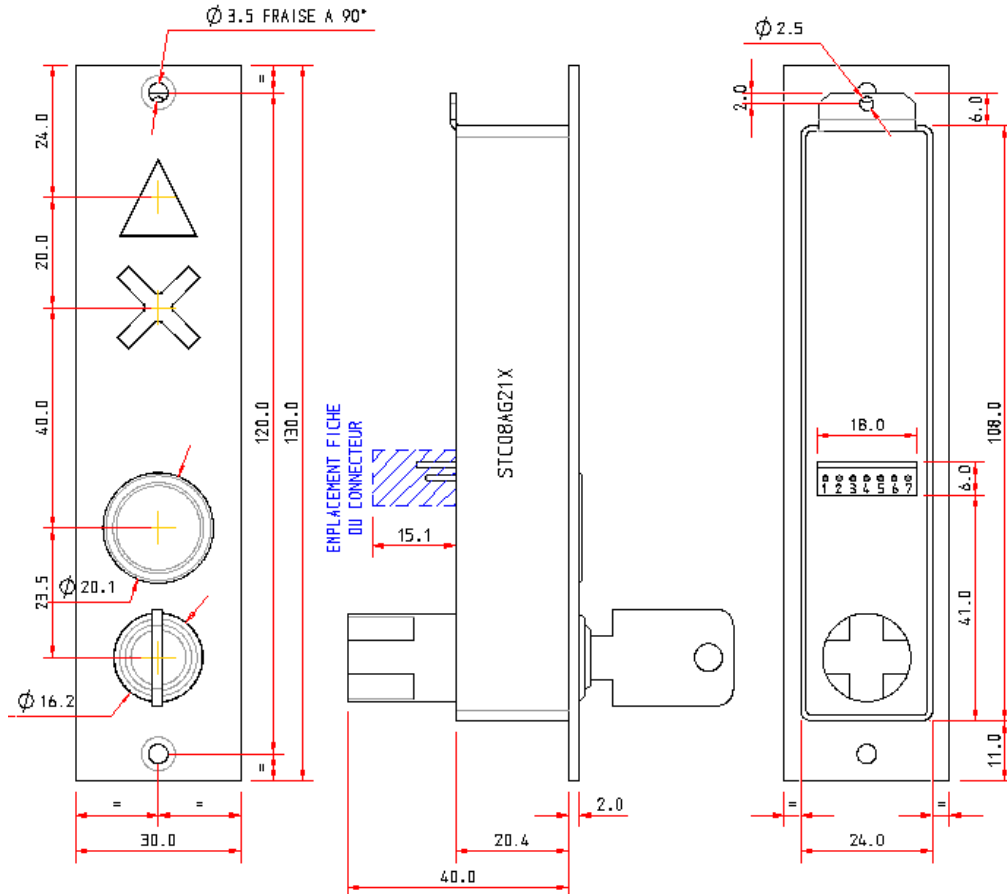
ELECTRICAL DIAGRAM:



ELECTRICAL MODALITIES:

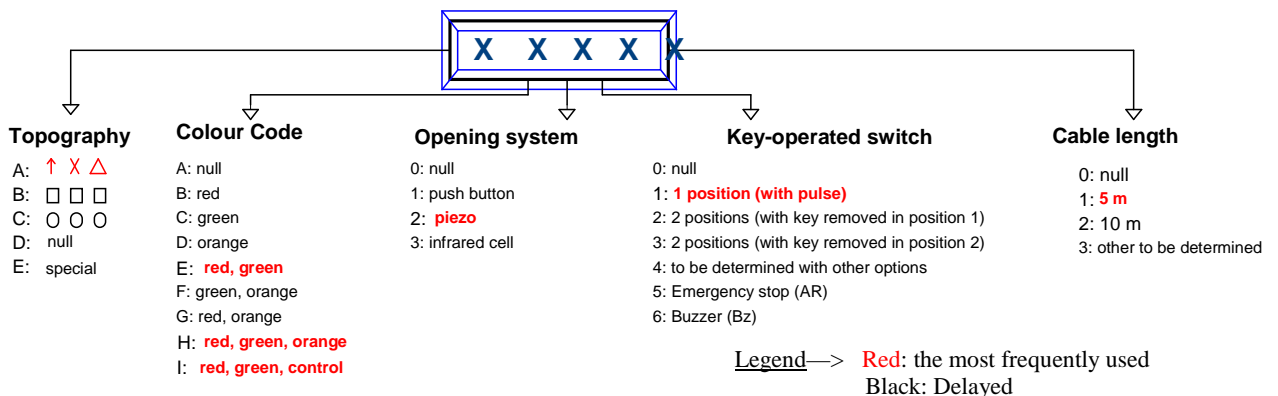
Parameter	Voltage (volt)		Current (milliamperes)
	Min	Max	
Orange LED		24V	30mA
Red LED		24V	30mA
Piezo	5V	42V	100mA
Key-operated switch		24V	

MECHANICAL FORMATS:



INFORMATION FOR ALL FUNCTIONS:

STC 08 PLATE



Certificate No.
2003-21005

290 Rue Louise Labé – BP.58– F-69970 CHAPONNAY

Phone: +33 (0)4.78.21.14.14 – Fax: +33 (0)4.78.21.62.80 – E-mail: salles_blanches@stc.fr

E-mail: export@stc.fr

E-mail: electronique@stc.fr

Simplified Joint Stock Company (S.A.S.) with a social capital of 37,000 EUR – APE 281 A – RCS LYON B 320 341 449 – TVA FR 60 320 341 449